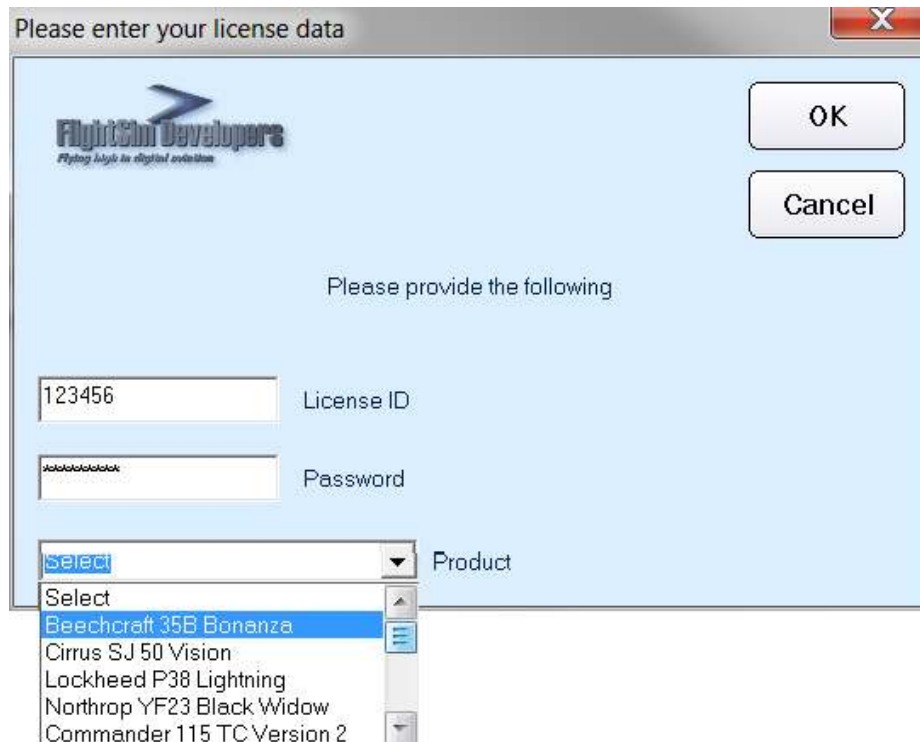


Data Test Utility

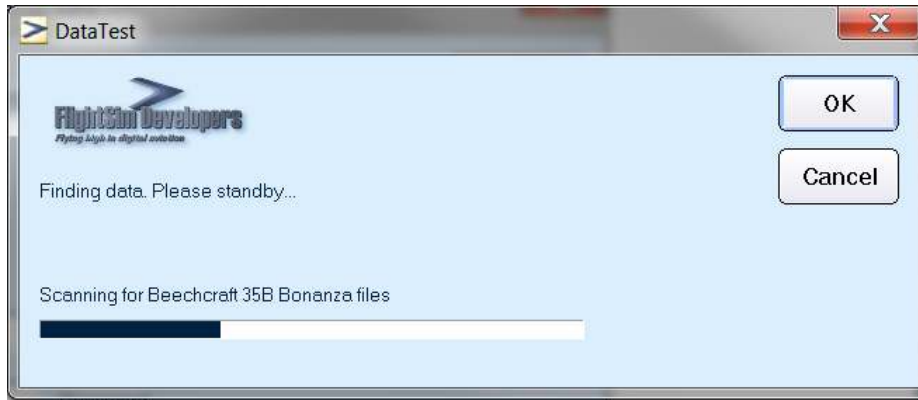
The Data Test Utility is designed to check the file, license and registry structure of a particular software title post installation, and to provide a data report that can be sent to our Tech Support Department to help us determine what may be the cause of a technical issue that you may be experiencing. Download the utility to any directory on your hard drive and run it.

User Interface

The Graphic User Interface is very simple to use. Select the software title using the Product dropdown box, enter your license ID and password for that title, and then press **OK**.



The screenshot shows a dialog box titled "Please enter your license data" with a close button (X) in the top right corner. The dialog box has a light blue background and contains the FlightSim Developers logo in the top left. Below the logo, there are two buttons: "OK" and "Cancel". The main text in the dialog says "Please provide the following". There are three input fields: a text box containing "123456" labeled "License ID", a password box containing "*****" labeled "Password", and a dropdown menu labeled "Product" with a list of aircraft models: "Select", "Beechcraft 35B Bonanza", "Cirrus SJ 50 Vision", "Lockheed P38 Lightning", "Northrop YF23 Black Widow", and "Commander 115 TC Version 2".



The utility will scan the license and file structure for the software title you selected. A text file titled **DataReport.txt** will be created in the same folder from which you downloaded and executed the utility.



This report contains critical data that Tech Support can use to determine if your installation was normal. You can send the entire text file to us, or cut and paste from it in a support message. Just go to our [Support](#) Page and select the [Contact Us](#) button, and then select [Tech Support](#).



Data Test Utility User Manual

Sample data (normal installation):

DATA TEST REPORT
Beechcraft 35B Bonanza

Date: Saturday, November 27, 2010 at 09:43
License status: Activated
This report run from: C:\Users\Ironman\Downloads

FLIGHT SIMULATOR VERSIONS INSTALLED:
Path to FS X: C:\Program Files (x86)\Microsoft Games\Microsoft Flight Simulator X\
FS X Aircraft data key FOUND: Software\FSD International\BonanzaV35B - FSX
Aircraft directory from registry key: C:\Program Files (x86)\Microsoft Games\Microsoft Flight Simulator
X\SimObjects\Airplanes\FlightSim Developers V35B
Load Manager config file physically FOUND: C:\Program Files (x86)\Microsoft Games\Microsoft Flight Simulator
X\SimObjects\Airplanes\FlightSim Developers V35B\Data\Loadout.cfg
Install log path: C:\Program Files (x86)\Microsoft Games\Microsoft Flight Simulator
X\SimObjects\Airplanes\FlightSim Developers V35B\InstallLog.txt
Files found: 267
Files not found: 0
Gauge file: C:\Program Files (x86)\Microsoft Games\Microsoft Flight Simulator X\SimObjects\Airplanes\FlightSim
Developers V35B\panel\FSDDevBonanza.CAB
Avionics driver: FDev.dll
Dll.xml file: Configured